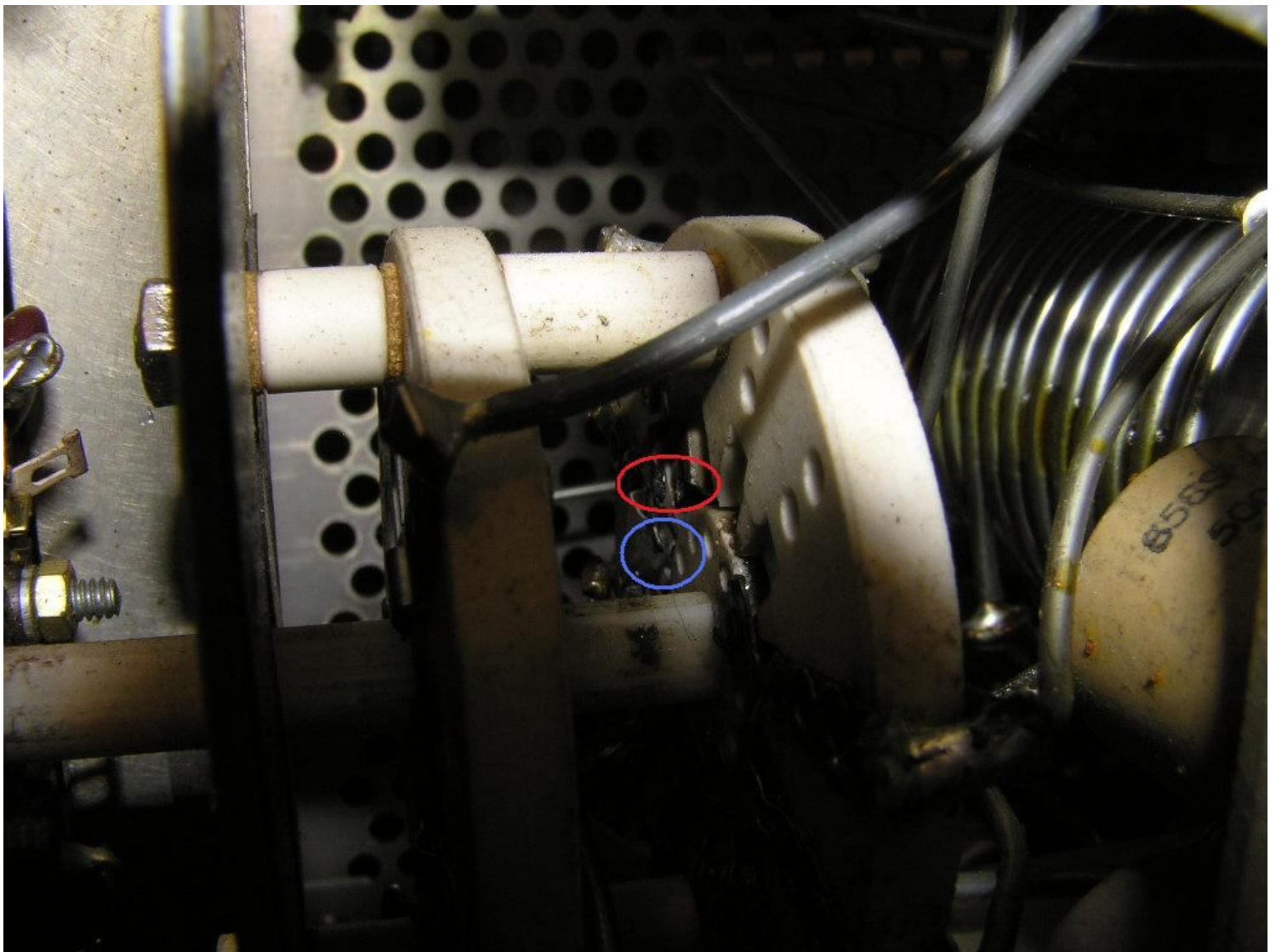
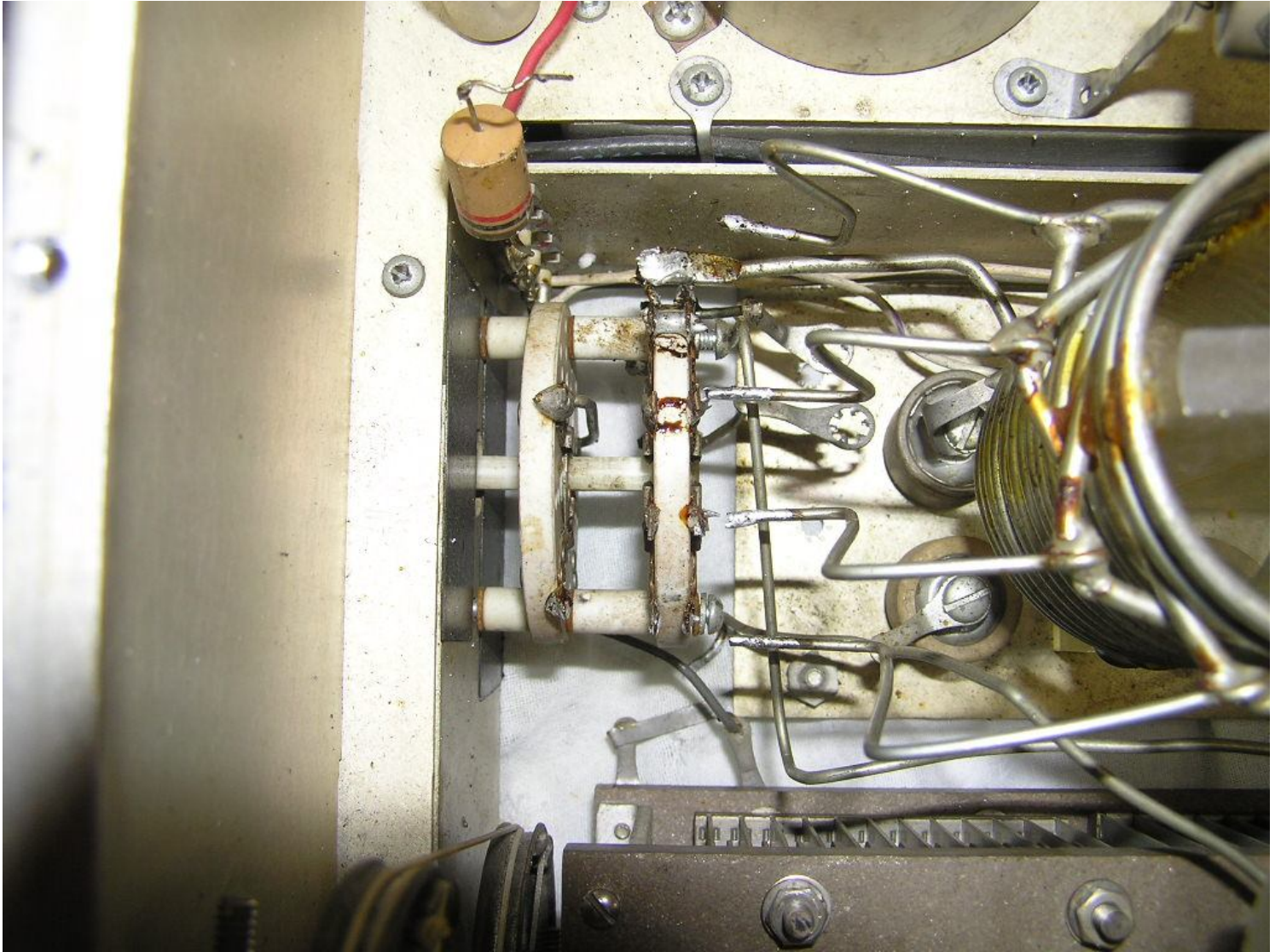


# SR-2000 PA BAND SWITCH REPLACEMENT BY WD0GOF

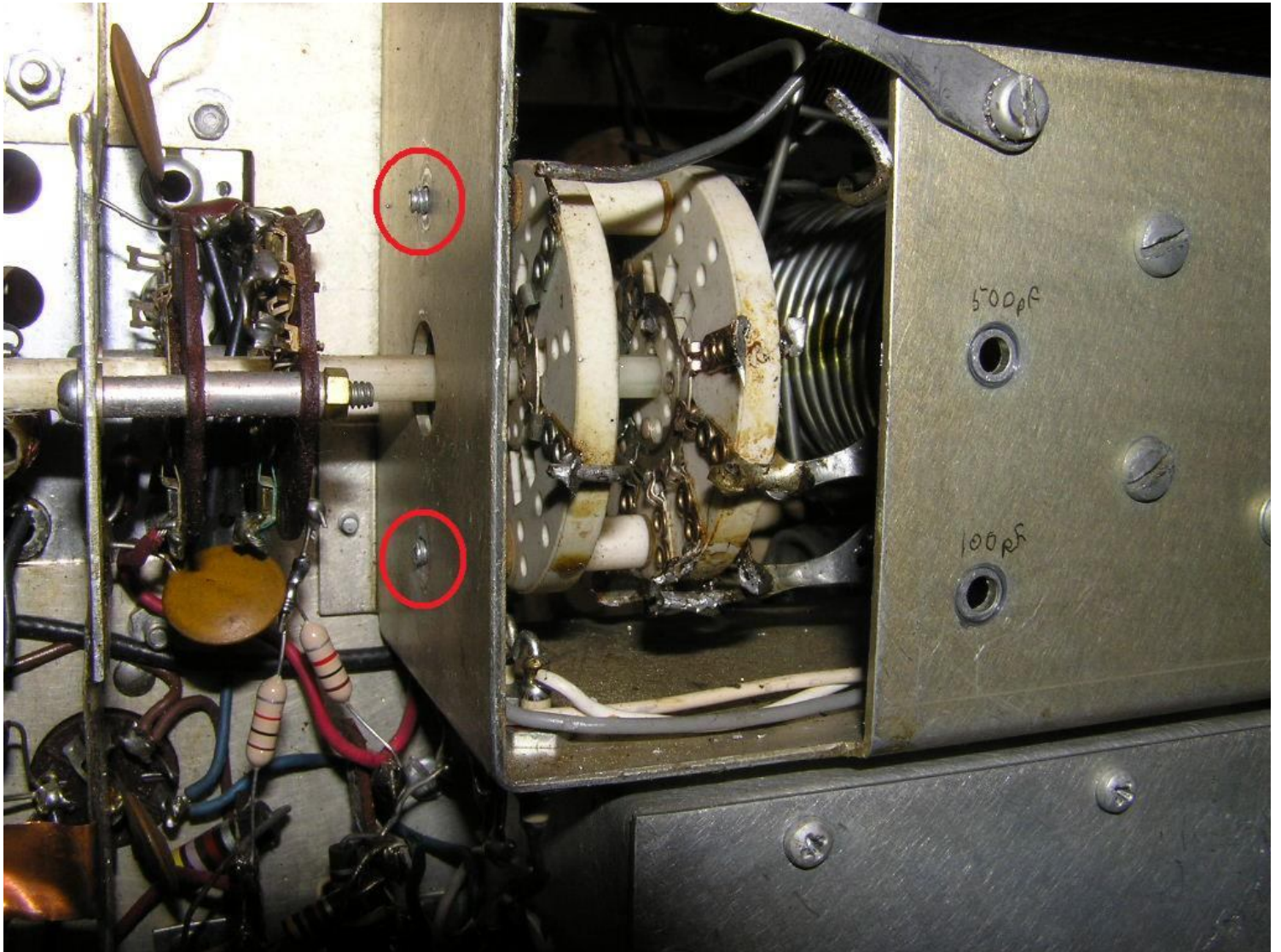
**THE PROBLEM:** If you look closely at the red and blue circles you can see the contact ends in the red circle have been blown away, vaporized. The contacts in the blue circle show what they should look like. Two other contacts that cannot be seen are also damaged.



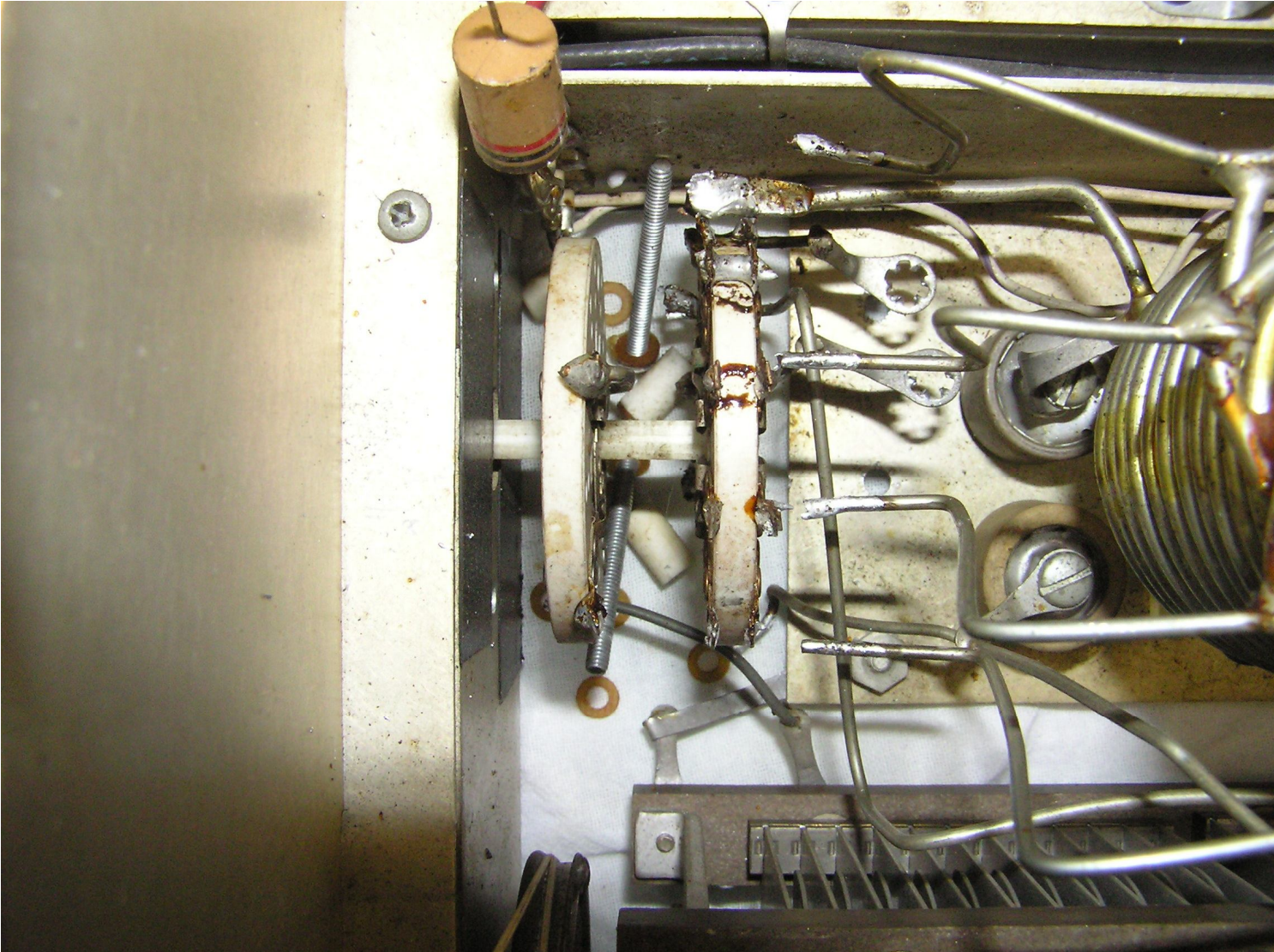
I removed C151 and C153 then de-soldered the switch and removed wires.



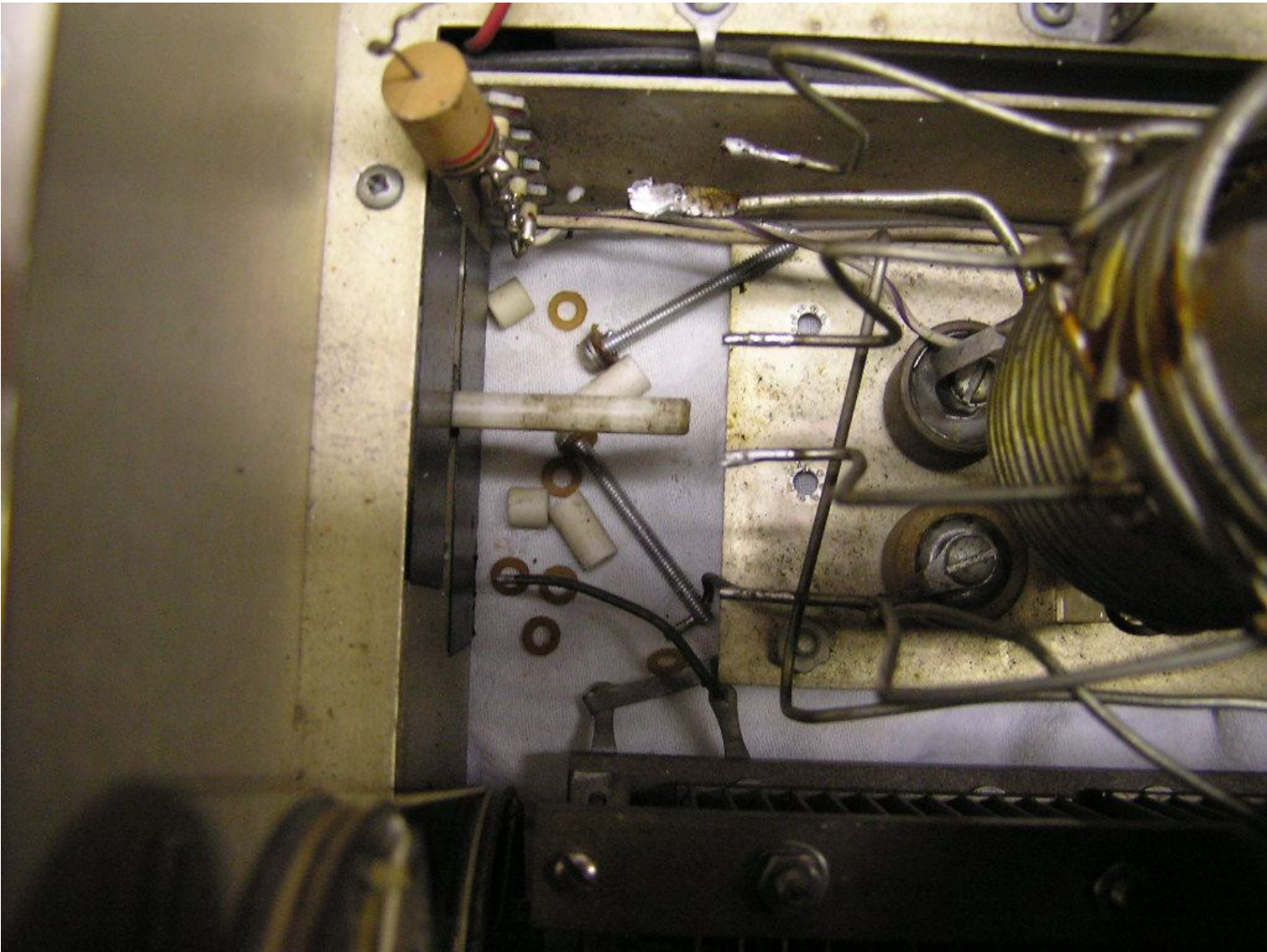
Next remove the nuts from the mounting bolts



Then remove the mounting screws and let the washers and spacers fall on the dish towel under the rig.

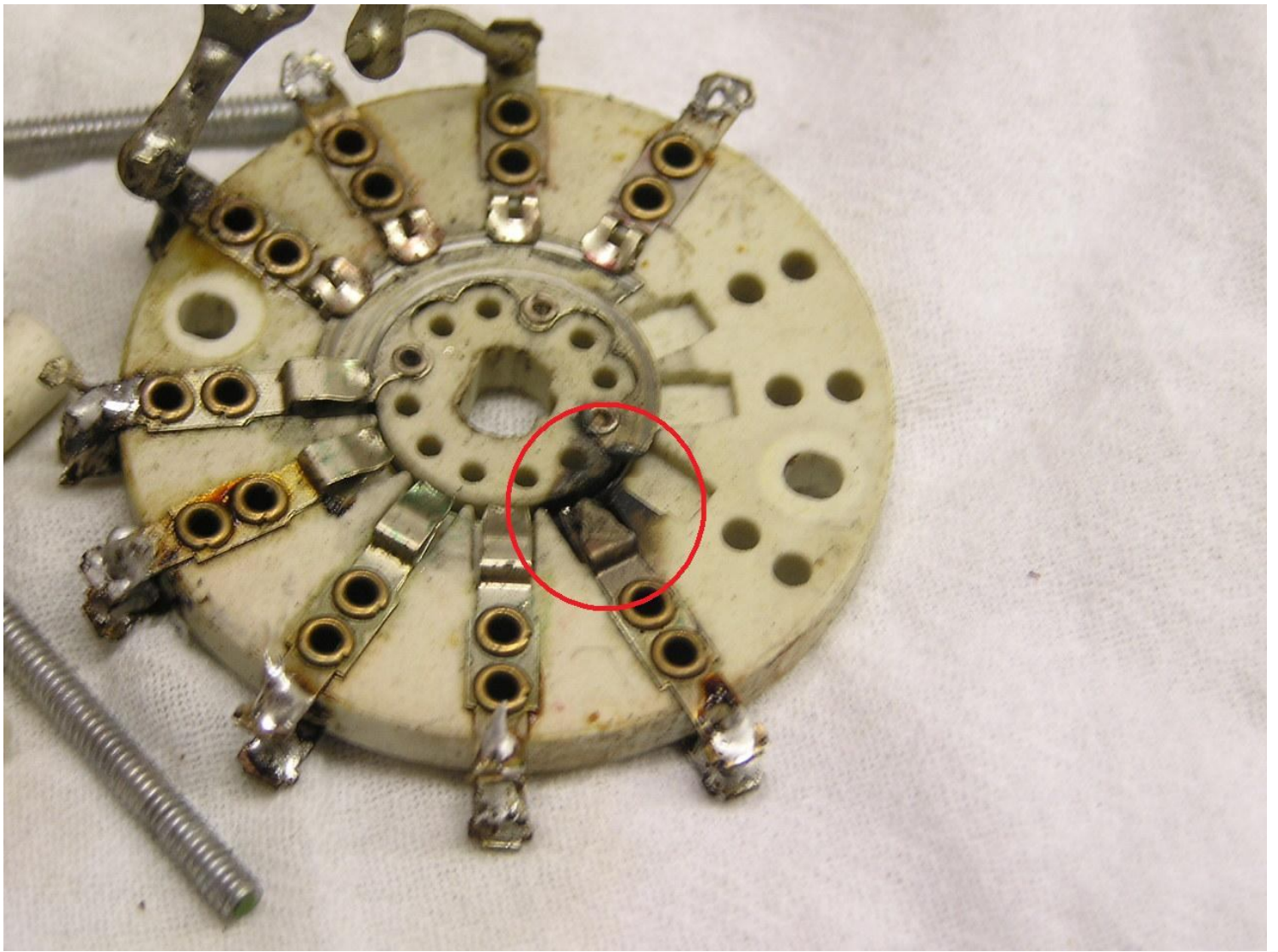


With C151 and C153 removed the switch wafers have enough clearance to slide off the shaft.

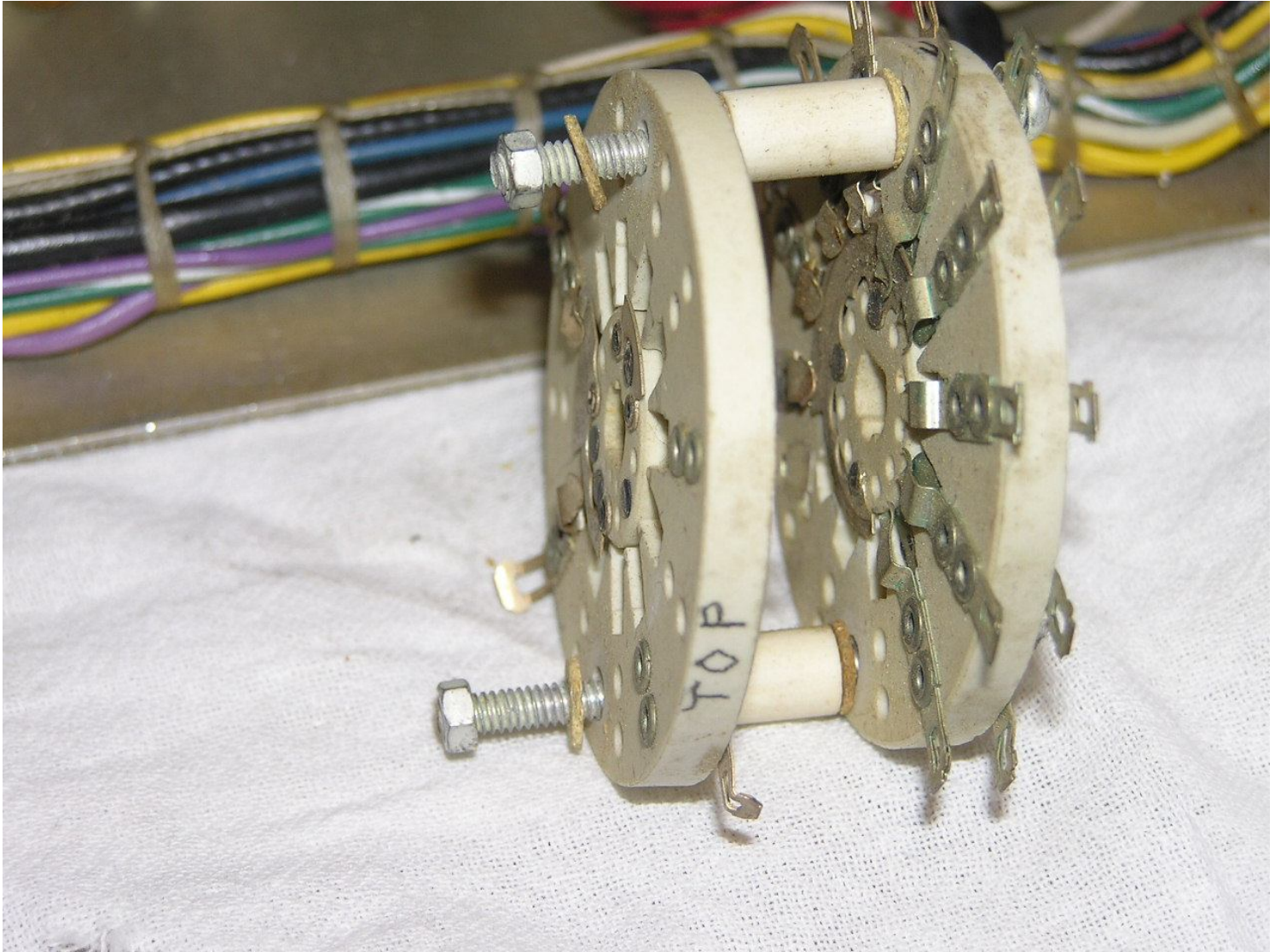


Now it is a little easier to see the damage.



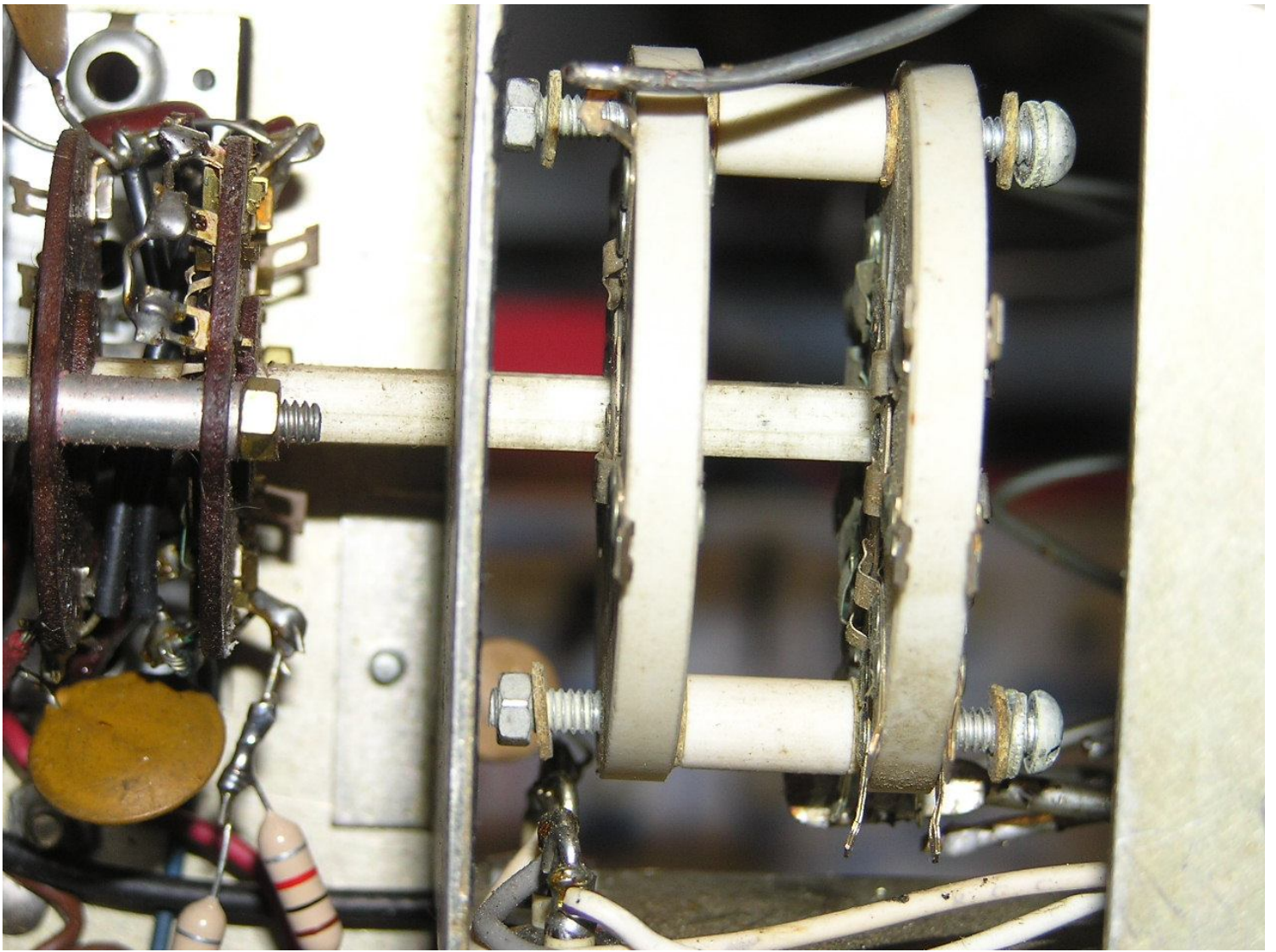


Next loosely assemble and preset rotor portion of each switch.

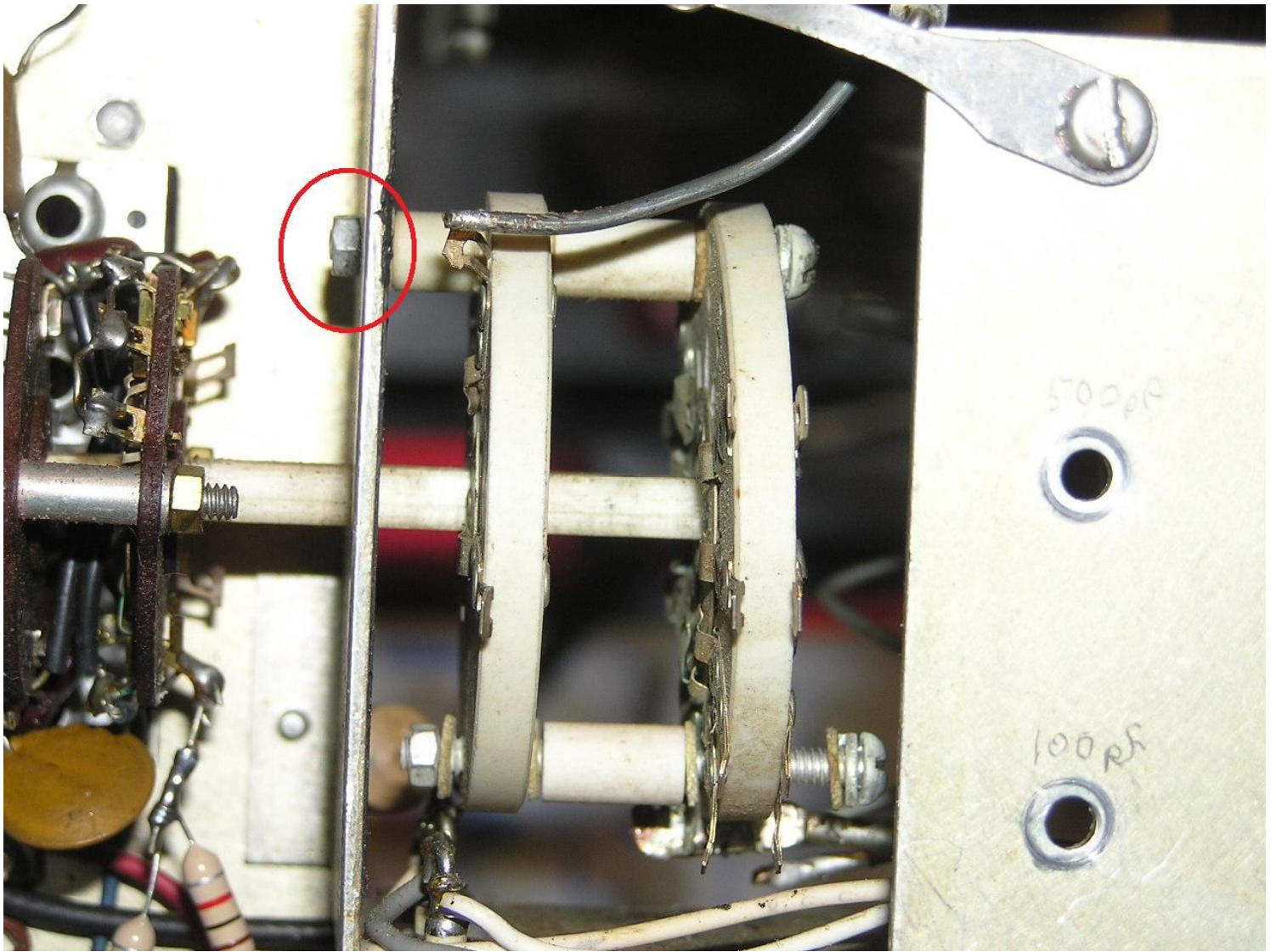




Loose fit complete



The whole assembly is rather unstable so when I installed the chassis spacer on the top side I did not try to put the flat and lock washer under the nut at this time. The nut is lightly snugged just enough to stabilize the assembly



After stabilizing the top mount it is a simple matter to install the bottom spacer washers and nut. This nut is tightened to spec. at this time. Then the top nut is removed and the flat and lock washer is installed and the nut is replaced.

